



مركز الملك سلمان  
للإغاثة والأعمال الإنسانية  
**KING SALMAN**  
HUMANITARIAN AID & RELIEF CENTRE

# ASBAR Council

King Salman Humanitarian Aid and Relief Centre

KSrelief

[www.ksrelief.org](http://www.ksrelief.org)

Twi.: KSRelief | Ins.: Ksrelief | Fb.: Ksrelief.org | E.M.: info@ksrelief.org | Ph.: +966 920 008 554





**KING SALMAN**  
HUMANITARIAN AID & RELIEF CENTRE



**مركز الملك سلمان  
للإغاثة والأعمال الإنسانية**

On 13 May 2015, the Kingdom's leadership established King Salman Humanitarian Aid and Relief Centre (KSrelief) to implement and monitor the Kingdom's humanitarian assistance outside its borders. KSrelief works with partner agencies and organizations to deliver humanitarian aid, developing its operations and systems by focusing on staff capacity building. By creating an environment that encourages innovation and excellence, KSrelief has saved and improved the lives of millions of people in need around the world.



### **Vision**

To become a leading center for relief and humanitarian activities, and to transfer our values to the world.



### **Mission**

To manage and coordinate relief activities on an international level to ensure the provision of external aid in line with national interests.



KSrelief  
[www.ksrelief.org](http://www.ksrelief.org)

Tel.: KSRelief | Ins.: Karelief | Pb.: Karelief.org | E.M.: info@karelief.org | Ph.: +966 920 008 554

# KSrelief

1. Is the humanitarian representative for the Kingdom of Saudi Arabia.
2. Is the sole body authorized to receive any relief, charitable or humanitarian donations, whether governmental or private, to be delivered to those in need abroad.
3. Monitors for the Kingdom's international humanitarian and relief work.
4. Provides governance for humanitarian action to ensure that charitable funds are used only for their intended purposes.
5. Coordinates humanitarian donations.
6. Authorizes Saudi charities to work abroad according to specific mechanisms.
7. Monitors and evaluates Saudi humanitarian and relief work abroad.

# Governance

## Includes:

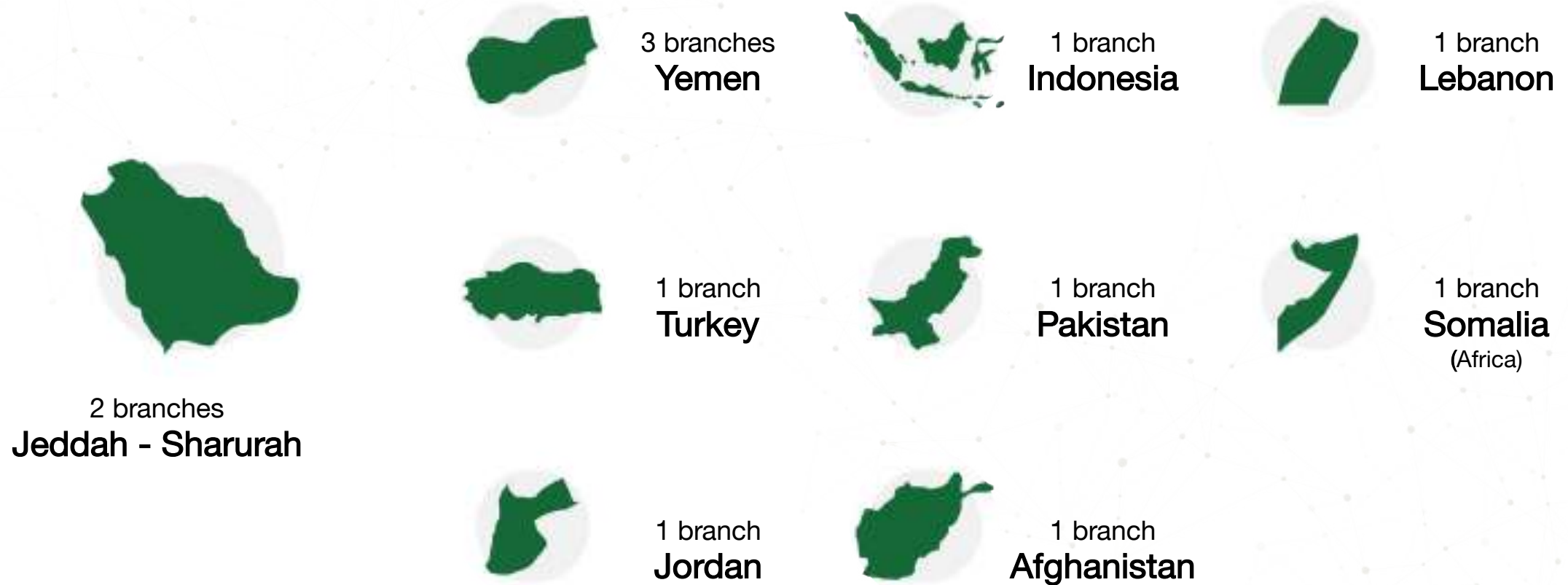
- Financial Control Department
- Executive Team and Standing Committees (including the Expenditure Management Committee)
- Internal Audit and Risk Department
- External Audit (contracted with an external auditor's office)
- Monitoring and evaluation of the center's projects
- Project Management Office (PMO)
- Results and Performance Management (under development)
- The Humanitarian Charter

# The Organizational chart (temporary)

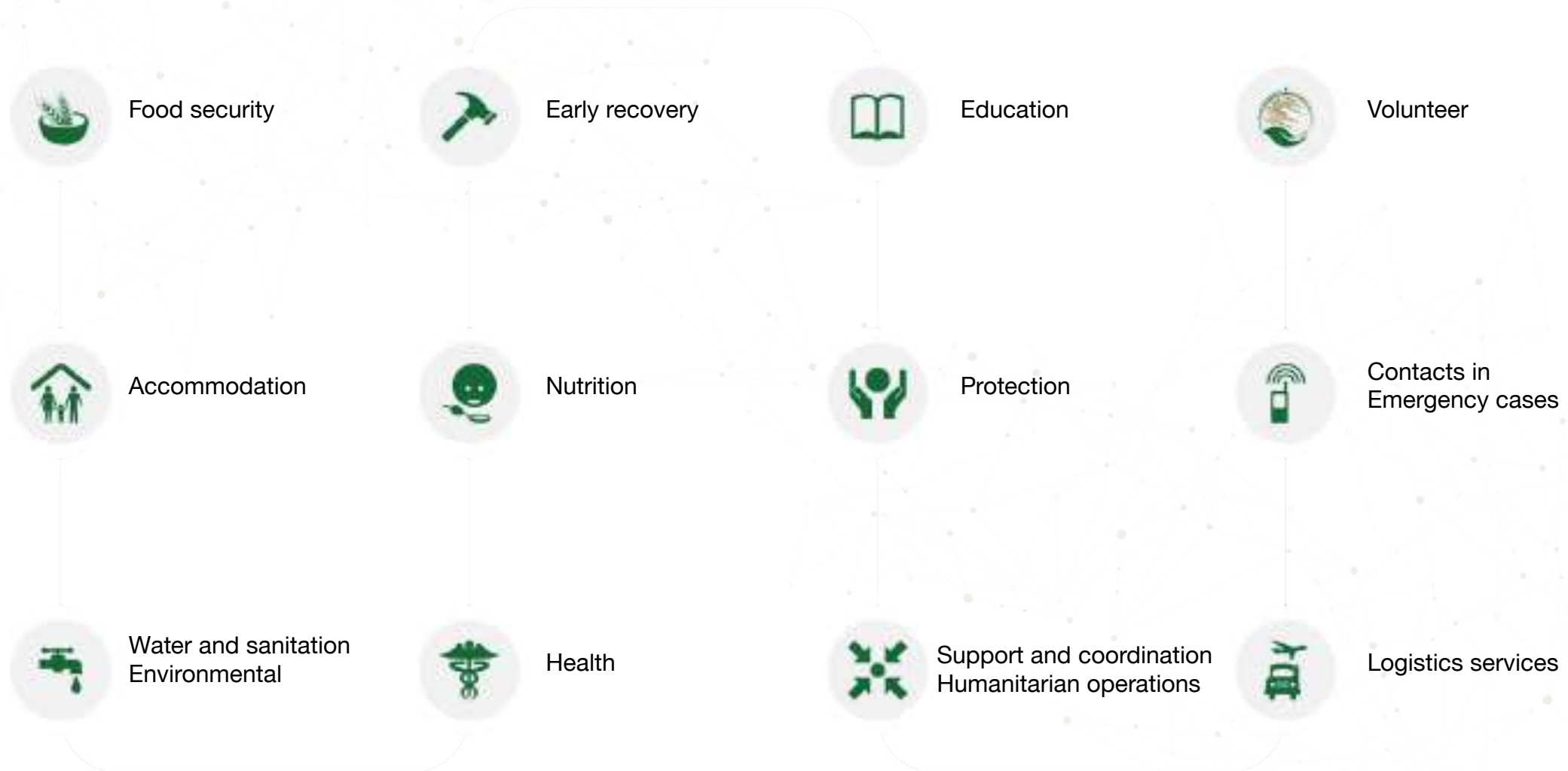




# KSrelief Branch Offices



# Humanitarian Clusters



# Kingdom of Saudi Arabia

The Custodian of the Two Holy Mosques – King Salman bin Abdulaziz



## Examples of His Majesty's Humanitarian Role:

- 1965** | Committee: Victims of Suez Crisis
- 1973** | National Committee: Victims of Indo-Pakistani War
- 1988** | Committee: Flood Victims in Sudan
- 1990** | Committee: Refugee Assistance during the first Gulf Crisis
- 1992** | Supreme Authority: To provide refugee assistance to the people of Bosnia and Herzegovina



## Kingdom of Saudi Arabia Aid 1996 - 2021

# USD 93.8 billion



Supporting 156 countries

# OUR CORE VALUES

- Impartiality
- Transparency
- Quality and professionalism
- Initiative and creativity
- Building partnerships and supporting communities



# KSA's Humanitarian Efforts (KSrelief)

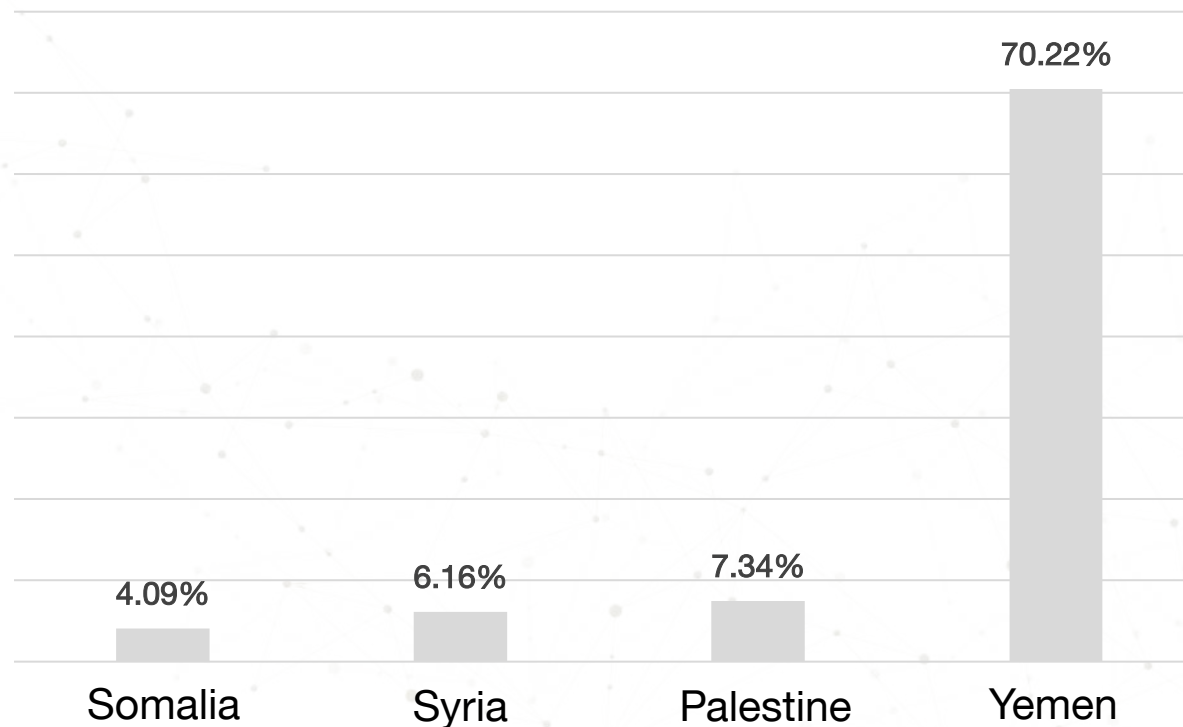
2015 – present

Yemen USD 3,475,763,446

Palestine USD 363,112,732

Syria USD 304,725,378

Somalia USD 202,212,060



Total Cost

USD 4,949,538,635 | 1,536 projects in 59 countries



# KSrelief's Humanitarian Assistance



59  
Countries

A world map with a light gray background and a network of thin gray lines connecting dots. 59 countries are highlighted in dark green. These countries are primarily located in the Middle East, North Africa, and South Asia, with some scattered locations in Southeast Asia and the Pacific. The highlighted countries include Iraq, Syria, Jordan, Lebanon, Turkey, Iran, Afghanistan, Pakistan, India, Bangladesh, Nepal, Sri Lanka, Myanmar, Thailand, Cambodia, Laos, Vietnam, Philippines, Indonesia, Malaysia, Brunei, Timor-Leste, and several countries in Africa and the Americas.

# Women-focused Projects

2015 – present



279 Projects



72,741,896 Beneficiaries



USD 464,007,874

# Child-focused Projects

2015 – present



294 Projects



118,210,302 Beneficiaries



USD 553,390,648



# MASAM Project for Clearing Landmines from Yemen

A King Salman Humanitarian Aid and Relief Centre Project



- More than 400 professionals are clearing landmines in Yemen
- Phase one in the governorates of:
  1. Ma'rib
  2. Aden
  3. Taiz
  4. Sana'a
  5. Al Jawf
  6. Al Hudaydah
  7. Lahij
  8. Shabwah
- Number of landmines deactivated: 215,961

**9 million beneficiaries /  
USD 100 million**

# Child Soldiers Rehabilitation Program in Yemen



Before



After



# Child Support and Protection Programs



Therapeutic nutrition



Support for basic health services



# Education Program





# “My Skills My Livelihood” Project





# Supporting reproductive health services for pregnant women and girls in Yemen





# Projects to Empower Women



**Vocational training and economic empowerment project**



**“Seed of Safety” project**  
Supporting and protecting orphans and their families in conflict areas

# KSrelief's Artificial Limbs Project

- Providing high-quality artificial limbs.
- Training local Yemeni cadres to manufacture and install prosthetic devices.
- Providing patients with rehabilitation services.



# KSrelief's initiatives to develop Saudi humanitarian action

1. Saudi Aid Platform
2. Saudi International Volunteer Portal
3. Saudi Aid for Refugees, IDPs and Visitors Platform (for refugees inside KSA)
4. E-donate portal
5. “Control and monitoring” activities
6. Documentation activities



## Saudi Aid Platform

### Aid Provided - Grand Total



48.87

Billion USD Dollar



183.27

Billion Saudi Riyal



### Top Countries Receiving Aid



Yemen

17,402,746,459



Syrian Arab Republic

6,279,123,665



Egypt

2,367,529,559



Palestine

2,063,741,075



Sudan

1,596,677,418



Morocco

1,209,974,357










# Saudi International Volunteer Portal

KSrelief is the humanitarian representative of the Kingdom of Saudi Arabia

## Volunteer with us to make a change



### Our Achievements

	Campaigns <b>105</b>			Registered <b>10,999</b>			Countries <b>18</b>			Beneficiaries <b>233,495</b>			Cost / Riyal <b>25,853,132</b>			No. Surgeries <b>28,505</b>	
---	-------------------------	---	---	-----------------------------	---	---	------------------------	---	---	---------------------------------	---	---	-----------------------------------	---	---	--------------------------------	---

[www.volunteer.ksrelief.org](http://www.volunteer.ksrelief.org)



**Volunteer Medical Campaign to Combat Blindness and its Causes - Senegal**





Volunteer Medical Campaign for Children's Open-heart Surgeries and Catheterizations in Hadramawt, Yemen





**Volunteer Medical Campaign for Surgeries for Pediatric Urinary Tract Defects in Seiyun, Yemen**



# Saudi Aid

for Refugees and IDPs



**79.9 Million**

Forcibly displaced people  
around the world

**45.7 Million**

Internally displaced people  
around the world

**26 Million Refugee**

**20.4 Million** Under the  
mandate of the Commission

**5.6 Million** A Palestinian  
refugees registered with  
UNRWA

**4.2 Million**

Asylum seekers

Where do refugees and forcibly displaced people live around the world?

**80%**

Of the displaced around  
the world live in  
developing countries

**68%** From refugees around the world come from these five countries

Syria  
**6.6  
Million**

Venezuela  
**3.7  
Million**

Afghanistan  
**2.7  
Million**

South Sudan  
**2.2  
Million**

Myanmar  
**1.1  
Million**

## Refugees in the Kingdom (visitors)

**249,669**  
**Myanmar**

**262,573**  
**Syria**

**561,911**  
**Yemen**

Total of 1,093,926 refugees (5.26% of the number of Saudi Nationals).





**KING SALMAN**  
HUMANITARIAN AID & RELIEF CENTRE



مركز الملك سلمان  
للإغاثة والأعمال الإنسانية

## Online Donation Portal

### General Donations

You can donate to the general donations account, which serves all countries and programs, and you can specify the country you wish to donate to



Total Donations / SAR

**17,796,946**



Total Donors

**55,951**

[donate.ksrelief.org](https://donate.ksrelief.org)



---

Taiz initiative (breaking the siege of 2015)

---





Taiz initiative (breaking the siege of 2015)



# The Kingdom's support for countries to combat COVID-19

King Salman Humanitarian Aid and Relief Centre

Country/Organization	USD
Yemen	59,496,540
Palestine	1,000,000
	3,010,000
United Kingdom of Great Britain and Northern Ireland	2,935,600
Greece	15,000,000
China	4,978,371
Malaysia	15,000,000
Italy	15,000,000
Iraq	3,661,203
WHO	10,000,000
Sudan	1,066,666
Bangladesh	1,115,000
Other international efforts	98,133,333
Total	229,396,733

# Kingdom's identity

## Highlighting the Kingdom's humanitarian role

Important programs and projects:

- Riyadh International Humanitarian Forum (held every two years)
- The International Missions of Soft Diplomacy
- Local and international press conferences (38 conferences)
- Talk shows and interviews (more than 380 interactions)
- Local and international seminars (more than 46 in the Kingdom and overseas)



# Humanitarian Work and the Media

Humanitarian work has a very significant role in alleviating human suffering and contributing to resolving conflicts, and it can achieve the following goals through the media:

1. Soft diplomacy and the Kingdom's efforts to serve humanity.
2. Changing misconceptions about the Kingdom of Saudi Arabia.
3. Resolving conflicts and bridging gaps between the views of conflicting parties through humanitarian work.
4. Coordinating with international actors to protect the most vulnerable groups (i.e., children and women).



Secretary-General of the United Nations, HE António Guterres  
**KSrelief's Role in the Kingdom's Soft Diplomacy**





Senator Joe Manchin, United States Senator – Washington, D.C.

## KSrelief's Role in the Kingdom's Soft Diplomacy



Dr. John Duke Anthony, the Founding President and Chief Executive Officer of the National Council on U.S.-Arab Relations – Washington, D.C.

## KSrelief's Role in the Kingdom's Soft Diplomacy





H.E. Ms. Henrietta Fore, CEO of UNICEF  
**KSrelief's Role in the Kingdom's Soft Diplomacy**





H.E. Ms. Audrey Azoulay, the Director-General of the UNESCO  
**KSrelief's Role in the Kingdom's Soft Diplomacy**





Maronite Patriarch Bechara al-Rahi  
**KSrelief's Role in the Kingdom's Soft Diplomacy**





Ms. Anna Fotyga, Member of the European Parliament - Brussels  
**KSrelief's Role in the Kingdom's Soft Diplomacy**





Forum - Media Professionals





Al Zaatari Camp Visit - Jordan





# Conjoined Twins

# Conjoined Twins

Country	Number of Cases	Country	Cases
Saudi Arabia	40	Poland	1
Philippines	1	Cameroon	5
Tanzania	3	Mauritania	1
Malaysia	1	Somalia	2
Yemen	14	Bahrain	1
Egypt	5	Palestine	3
Sudan	12	Jordan	1
Syria	4	Algeria	3
Morocco	4	Libya	3
Iraq	7	Pakistan	1
Oman	1	<b>Total</b>	<b>113</b>



# Separation of Polish conjoined twins (3 January 2005)

The 11th case (Daria and Olga)





# Separation of Sudanese conjoined twins (8 February 1992)

The 2nd case (Samah and Hebah)



# Separation of Filipino conjoined twins (21 March 2004)

The 10th case (Ann and May)





# Separation of Cameroonian conjoined twins (21 April 2007)

The 15th case (Pheinbom and Shevoboh)







The birthplace of the Cameroonian twins



# Summary

- Humanitarian work is a reflection of Islamic tolerance.
- The Kingdom of Saudi Arabia plays a leading role in international humanitarian work.
- The importance of the Kingdom's humanitarian work in supporting its international stance.
- The importance of the media's role in highlighting Saudi's humanitarian efforts to the world (humanitarian media).
- The role of humanitarian work in resolving conflicts, achieving stability and sustainable development.

KING SALMAN  
HUMANITARIAN AID & RELIEF CENTRE



مركز الملك سلمان  
للإغاثة والأعمال الإنسانية

# Thank you

---